



A Brighter Solution

AMP DISPLAY INC.

SPECIFICATIONS

%\$(!B`7C@CF TFT MODULE

CUSTOMER:	
CUSTOMER PART NO.	
AMP DISPLAY PART NO.	5 A !, \$ \$ * \$ \$? H A E K ! 6 \$ <
APPROVED BY:	
DATE:	

☐

APPROVED FOR SPECIFICATIONS

☐

APPROVED FOR SPECIFICATION AND PROTOTYPES

AMP DISPLAY INC

9856 SIXTH STREET RANCHO CUCAMONGA CA 91730
TEL: 909-980-13410 FAX: 909-980-1419
WWW.AMPDISPLAY.COM

The contents of this document are confidential and must not be disclosed wholly or in part to any third party without the prior written consent of CORFURNCO. (b) (5) DPP

RECORD OF REVISION

Revision Date	Page	Contents	Editor
2009/04/06	-	New Release	John
2009/06/03	-	Issued the official part No.	Emil

Preliminary

The contents of this document are confidential and must not be disclosed wholly or in part to any third party without the prior written consent of CORFURNCL TPE0

1. INSTRUCTION

Ampire 10.4" Display Module is a color active matrix TFT-LCD that uses amorphous silicon TFT as a switching device . This model is composed of a TFT-LCD panel and LED Backlight . This TFT-LCD has a high resolution (800(R.G.B) X 600) and can display up to 262,144 colors.

1.1 Features

- (1) Construction : a-Si TFT-LCD with driving system, White LED Backlight.
- (2) LCD type : Transmissive , Normally White
- (3) Number of the Colors : 262K colors (R,G,B 6 bit digital each)
- (4) RGB Interface.
- (5) LCD Power Supply Voltage : 3.3V
- (6) Build-in LED Driver IC (VLED=3.3V~5V).

2. PHYSICAL SPECIFICATIONS

Item	Specifications	unit
Display resolution(dot)	800RGB (W) x 600(H)	dots
Active area	211.2 (W) x 158.4(H)	mm
Pixel pitch	88 (W) x 264 (H)	um
Color configuration	R.G.B -stripe	
Overall dimension	228.4(W)x175.4(H)x5.9(D)	mm
Weight	T.B.D	g
Brightness	250nit	cd/m ²
Contrast ratio	300	
Backlight unit	LED	
Display color	262,144	colors

Preliminary

The contents of this document are confidential and must not be disclosed wholly or in part to any third part without the prior written consent of CORFURNCL TPE0

3. ABSOLUTE MAXIMUM RATINGS

Item	Symbol	Min.	Max.	Unit
Power Voltage	VCC	-0.3	6	V
	VLED	-0.3	6	V
Temperature Range	Operation	-20	70	°C
	Storage	-30	80	°C

- (1). All of the voltages listed above are with respect to GND =0V
- (2). Device is subject to be damaged permanently if stresses beyond those absolute maximum ratings listed above.

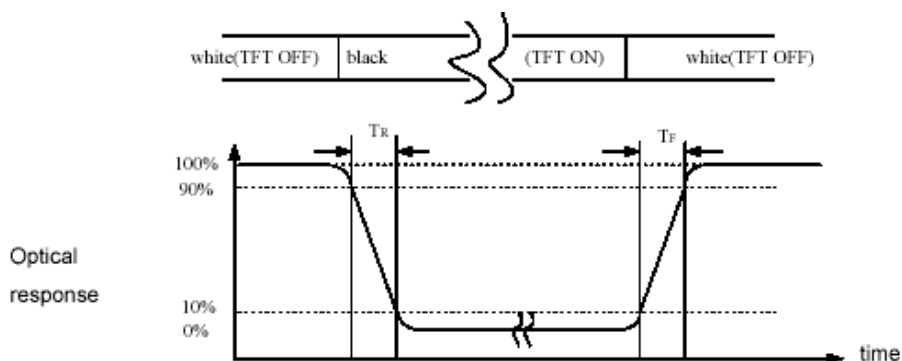
4. OPTICAL CHARACTERISTICS

Item		Symbol	Conditon	Min.	Typ.	Max.	Unit	Note
Response Time		$T_r + T_f$	$\Theta = \Phi = 0^\circ$	-	20	30	ms	(1)
Contrast ratio		CR		300	500	-	-	(2)(3)
Viewing Angle	Vertical	Θ	$CR \geq 10$	90	110	-	Deg.	(5)
	Horizontal	Φ		120	140	-		
Luminance		L	$\Theta = \Phi = 0^\circ$	200	250	-	cd/m ²	(3)(4)
Luminance Uniformity		ΔL		-	70	-	%	(3)(4)
Color chromaticity	White	Wx		0.26	0.31	0.37		
		Wy		0.27	0.33	0.38		

NOTE :

- These items are measured by BM-5A(TOPCON) or CA-1000(MINOLTA) in the dark room (no ambient light)

(1) Definition of Response Time (White-Black)



Preliminary

The contents of this document are confidential and must not be disclosed wholly or in part to any third part without the prior written consent of COR'F KURNCAI 'P E0

(2) Definition of Contrast Ratio

Measure contrast ratio on the below 5 points(refer to figure1,#1~#5point) and take the average value

Contrast ratio is calculated with the following formula :

$$\text{Contrast Ratio(CR)} = (\text{White})\text{Luminance of ON} \div (\text{Black})\text{Luminance of OFF}$$

(3) Definition of Luminance :

Measure white luminance on the same 5 points and take the average value

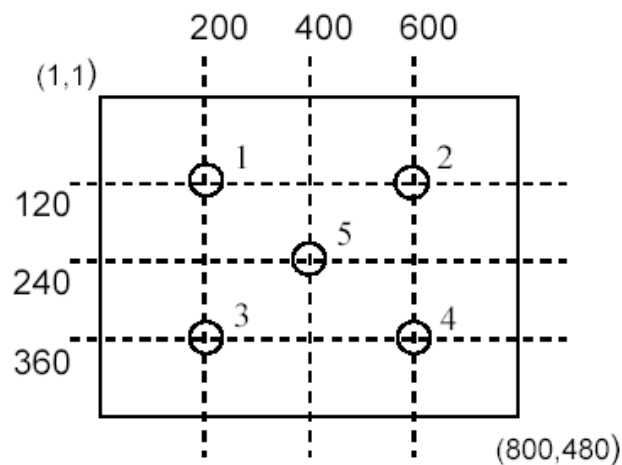


Fig.1 Measuring point

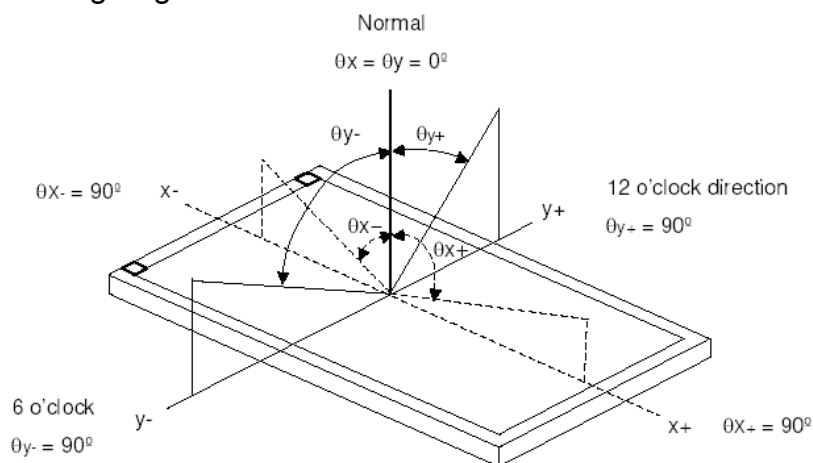
(4) Definition of Luminance Uniformity :

Measured Maximum luminance[L(MAX)] and Minimum luminance[L(MIN)] on the 5 points

Luminance Uniformity is calculated with the following formula :

$$\Delta L = [L(\text{MIN}) / L(\text{MAX})] \times 100\%$$

(5) Definition of Viewing Angle



$$\Phi = (\theta_{x+}) + (\theta_{x-}) \quad \Theta = (\theta_{y+}) + (\theta_{y-})$$

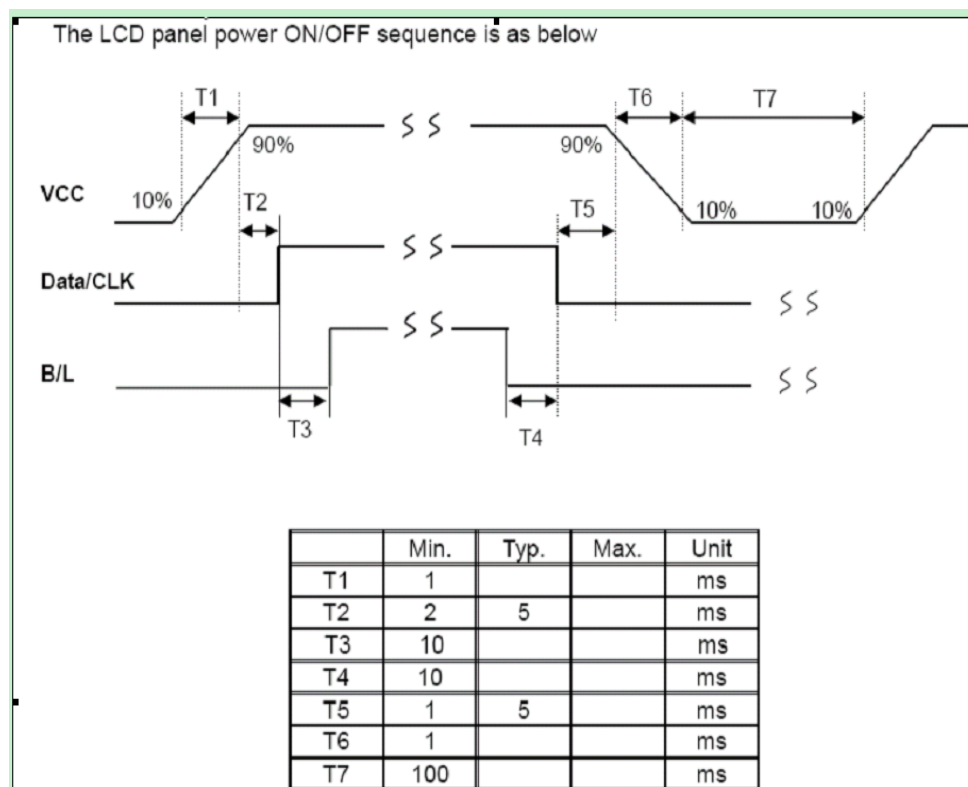
Preliminary

The contents of this document are confidential and must not be disclosed wholly or in part to any third part without the prior written consent of CORFURNCE[TE0

5. ELECTRICAL CHARACTERISTICS

5.1 TFT LCD Module voltage

ITEM	SYMBOL	MIN	TYP	MAX	UNIT	NOTE
Power Voltage For LCD	V _{CC}	3.0	3.3	3.6	V	
Digital Supply current Consumption	I _{VCC}		T.B.D		mA	Black Pattern
Logic Input Voltage	V _{IH}	V _{CC} *0.7	--	V _{CC}	V	
	V _{IL}	0	--	V _{CC} *0.3	V	



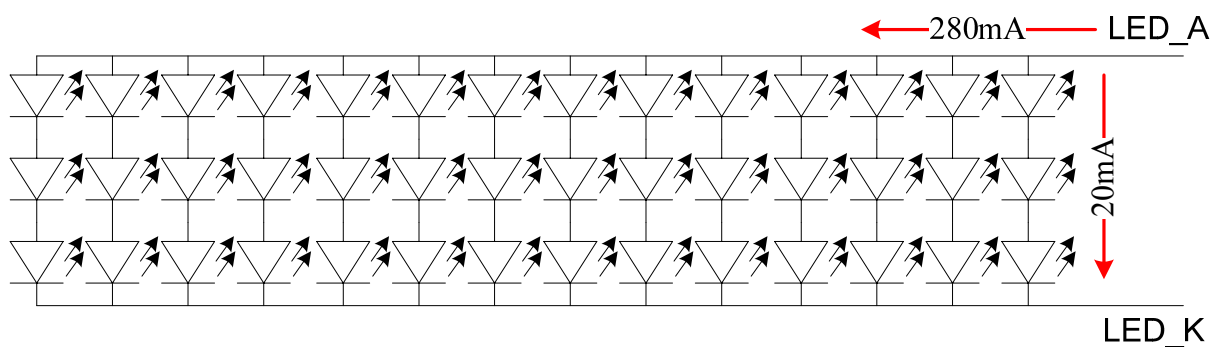
5.2 Backlight Driving Circuit

ITEM	SYMBOL	MIN	TYP	MAX	UNIT	NOTE
LED Voltage	V _{LED}	3.3	--	5V	V	Note1
LED Current	I _{LED}	--	T.B.D	--	mA	
LED life time		10000	--	-	Hr	Note2
LED DRIVER Power Current	I _{LED} (V _{LED} =5V)	-	T.B.D	--	mA	

Preliminary

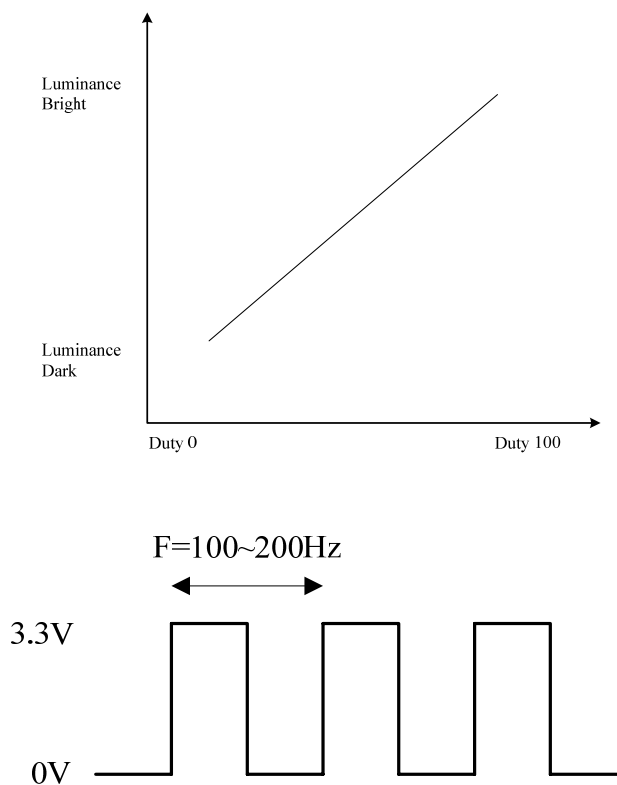
The contents of this document are confidential and must not be disclosed wholly or in part to any third part without the prior written consent of CORFURNCL TPE0

Note 1 : There are 6 Groups LED shown as below , $V_{LED}=9.9V$



Note 2 : Brightness to be decreased to 50% of the initial value.

5.3PWM Dimming Control



Preliminary

The contents of this document are confidential and must not be disclosed wholly or in part to any third part without the prior written consent of CORFURNCL TPEO

6. INTERFACE

RGB INTERFACE CN:

Pin No	Symbol	Function	Remark
1	NC	No connection	
2	NC	No connection	
3	NC	No connection	
4	VLED	Power Supply for LED	
5	VLED	Power Supply for LED	
6	VLED	Power Supply for LED	
7	Vcc	Power Supply for LCD	
8	Vcc	Power Supply for LCD	
9	DE	Data Enable	
10	NC(XL)	No connection (Touch Panel Right Signal in X Axis)	
11	NC(YU)	No connection (Touch Panel Right Signal in Y Axis)	
12	ADJ	Adjust for LED Brightness by PWM.	
13	B5	Blue Data 5 (MSB)	
14	B4	Blue Data 4	
15	B3	Blue Data 3	
16	Vss	Power Ground	
17	B2	Blue Data 2	
18	B1	Blue Data 1	
19	B0	Blue Data 0 (LSB)	
20	Vss	Power Ground	
21	G5	Green Data 5 (MSB)	
22	G4	Green Data 4	
23	G3	Green Data 3	
24	Vss	Power Ground	
25	G2	Green Data 2	
26	G1	Green Data 1	
27	G0	Green Data 0 (LSB)	
28	Vss	Power Ground	
29	R5	Red Data 5 (MSB)	
30	R4	Red Data 4	
31	R3	Red Data 3	
32	Vss	Power Ground	
33	R2	Red Data 2	
34	R1	Red Data 1	
35	R0	Red Data 0 (LSB)	
36	NC (XR)	No connection (Touch Panel Right Signal in X Axis)	
37	NC (YB)	No connection (Touch Panel Right Signal in Y Axis)	
38	DCLK	Clock Signals	
39	Vss	Power Ground	
40	NC	No connection	

Preliminary

The contents of this document are confidential and must not be disclosed wholly or in part to any third part without the prior written consent of COR'F KURNCL "PEO

7. AC Timing characteristic

7-1 Timing Specification.

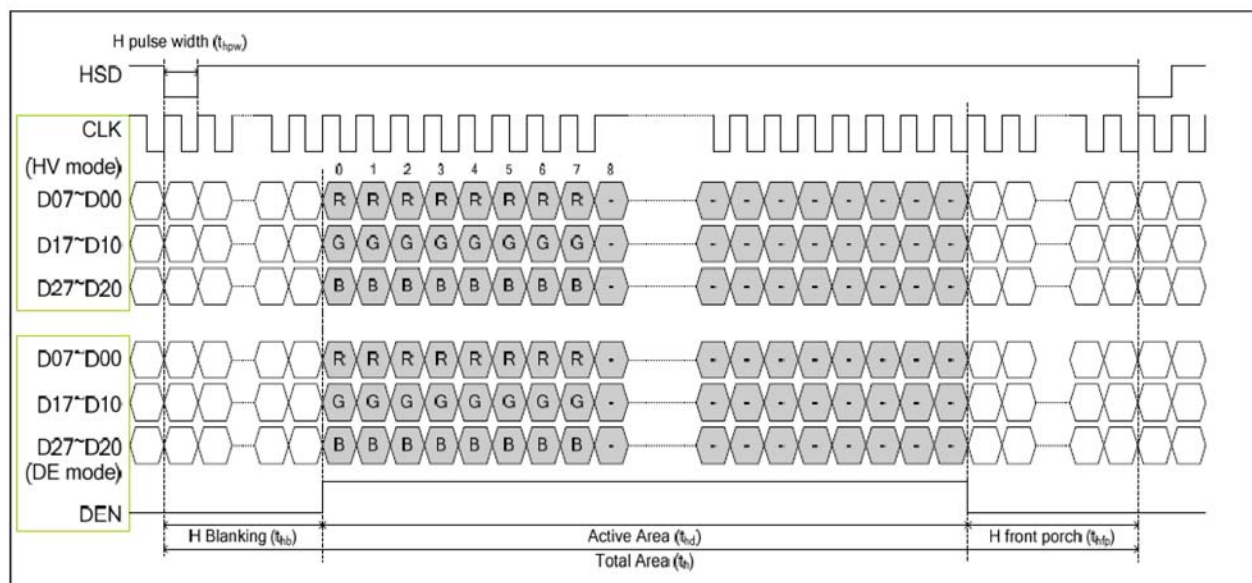
• Horizontal Timing

Parameter	Symbol	Spec			Unit
		Min.	Typ.	Max.	
Horizontal Display Area	thd	800			CLK
CLK Frequency	fclk	35	40	45	MHz
One Horizontal Line	th	880	1056	1190	CLK
HS Pulse Width	thpw	5	-	35	CLK
HS Back Porch	thb	46			CLK
HS Front Porch	thfp	25	210	310	CLK

• Vertical Timing

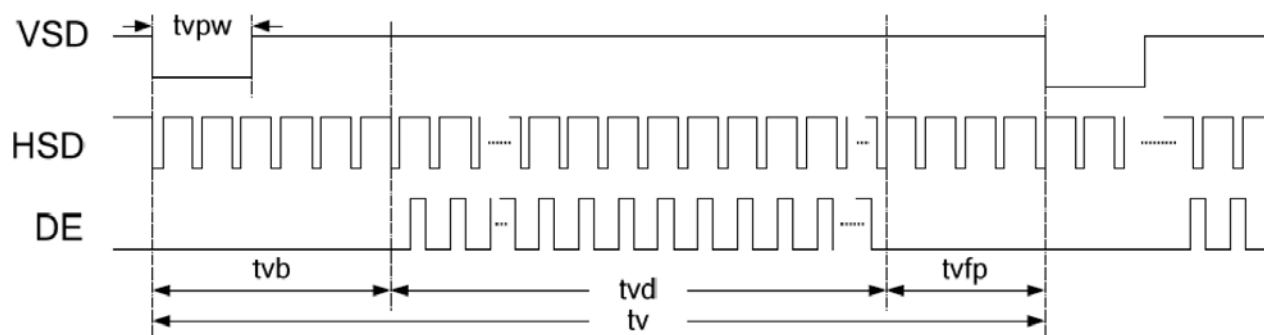
Parameter	Symbol	Spec			Unit
		Min.	Typ.	Max.	
Vertical Display Area	tvd	600			th
VS Period Time	tv	627	635	680	th
VS Pulse Width	tvpw	2	-	15	th
VS Back Porch	tvb	23	23	23	th
VS Front Porch	tvfp	2	2	42	th

Note: CHE suggest using frame rate 60Hz to have better performance



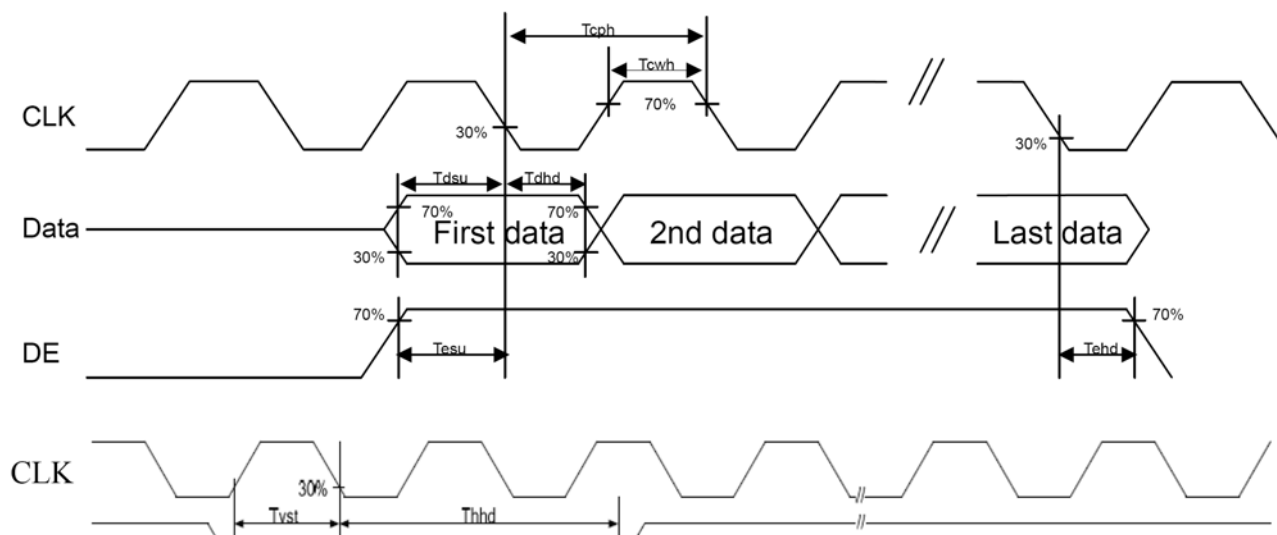
Preliminary

The contents of this document are confidential and must not be disclosed wholly or in part to any third part without the prior written consent of CORFURNIC [] P E 0



7.2 AC Electrical characteristic

Parameter	Symbol	Spec			Unit
		Min.	Typ.	Max.	
HSD Setup Time	Th_{st}	10			ns
HSD Hold Time	Th_{hd}	10			ns
VSD Setup Time	Tv_{st}	10			ns
VSD Hold Time	Tv_{hd}	10			ns
Data Setup Time	Td_{su}	10			ns
Data Hold Time	Td_{hd}	10			ns
DE Setup Time	Tes_{u}	10			ns
DE Hold Time	Teh_{d}	10			ns
CLK Cycle Time	Tc_{ph}	23			ns
CLK Pulse Duty	Tc_{wh}	40	50	60	%



Preliminary

The contents of this document are confidential and must not be disclosed wholly or in part to any third party without the prior written consent of COR'F KURNCL 'P E0

8. QUALITY AND RELIABILITY

8.1 TEST CONDITIONS

Tests should be conducted under the following conditions :

Ambient temperature : $25 \pm 5^{\circ}\text{C}$

Humidity : $60 \pm 25\% \text{ RH}$.

8.2 SAMPLING PLAN

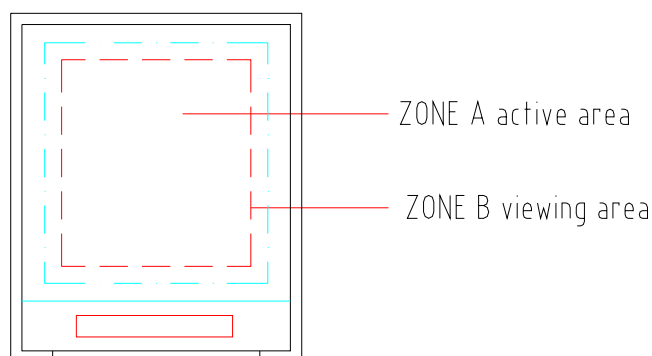
Sampling method shall be in accordance with MIL-STD-105E , level II, normal single sampling plan .

8.3 ACCEPTABLE QUALITY LEVEL

A major defect is defined as one that could cause failure to or materially reduce the usability of the unit for its intended purpose. A minor defect is one that does not materially reduce the usability of the unit for its intended purpose or is an infringement from established standards and has no significant bearing on its effective use or operation.

8.4 APPEARANCE

An appearance test should be conducted by human sight at approximately 30 cm distance from the LCD module under florescent light. The inspection area of LCD panel shall be within the range of following limits.



Preliminary

The contents of this document are confidential and must not be disclosed wholly or in part to any third part without the prior written consent of COR'F KURNCL 'TPE0

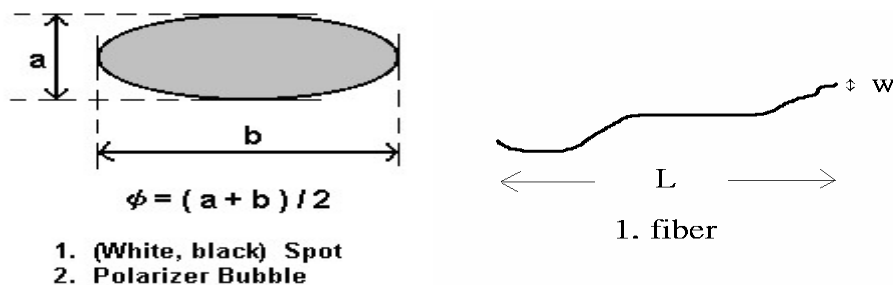
8.5 INCOMING INSPECTION STANDARD FOR TFT-LCD PANEL

DEFECT TYPE			LIMIT				Note	
VISUAL DEFECT	INTERNAL	SPOT	$\varphi < 0.15\text{mm}$		Ignore		Note1	
			$0.15\text{mm} \leq \varphi \leq 0.5\text{mm}$		$N \leq 4$			
			$0.5\text{mm} < \varphi$		$N=0$			
		FIBER	$0.03\text{mm} < W \leq 0.1\text{mm}, L \leq 5\text{mm}$		$N \leq 3$		Note1	
			$1.0\text{mm} < W, 1.5\text{mm} < L$		$N=0$			
		POLARIZER BUBBLE	$\varphi < 0.15\text{mm}$		Ignore		Note1	
			$0.15\text{mm} \leq \varphi \leq 0.5\text{mm}$		$N \leq 2$			
			$0.5\text{mm} < \varphi$		$N=0$			
		Mura	It' OK if mura is slight visible through 6%ND filter					
ELECTRICAL DEFECT	BRIGHT DOT	A Grade			B Grade			
		C Area	O Area	Total	C Area	O Area	Total	Note3
		$N \leq 0$	$N \leq 2$	$N \leq 2$	$N \leq 2$	$N \leq 3$	$N \leq 5$	Note2
	DARK DOT	$N \leq 2$	$N \leq 3$	$N \leq 3$	$N \leq 3$	$N \leq 5$	$N \leq 8$	
	TOTAL DOT	$N \leq 4$			$N \leq 5$	$N \leq 6$	$N \leq 8$	Note2
	TWO ADJACENT DOT	$N \leq 0$	$N \leq 1$ pair	$N \leq 1$ pair	$N \leq 1$ pair	$N \leq 1$ pair	$N \leq 1$ pair	Note4
	THREE OR MORE ADJACENT DOT	NOT ALLOWED						
	LINE DEFECT	NOT ALLOWED						

(1) One pixel consists of 3 sub-pixels, including R,G, and B dot.(Sub-pixel = Dot)

(2) LITTLE BRIGHT DOT ACCEPTABLE UNDER 6 % ND-Filter

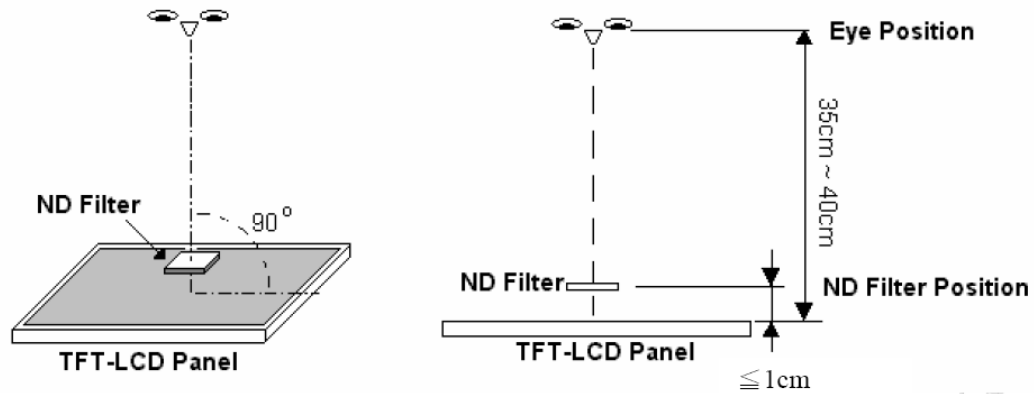
[Note1] W : Width[mm], L : Length[mm], N : Number, ϕ : Average Diameter



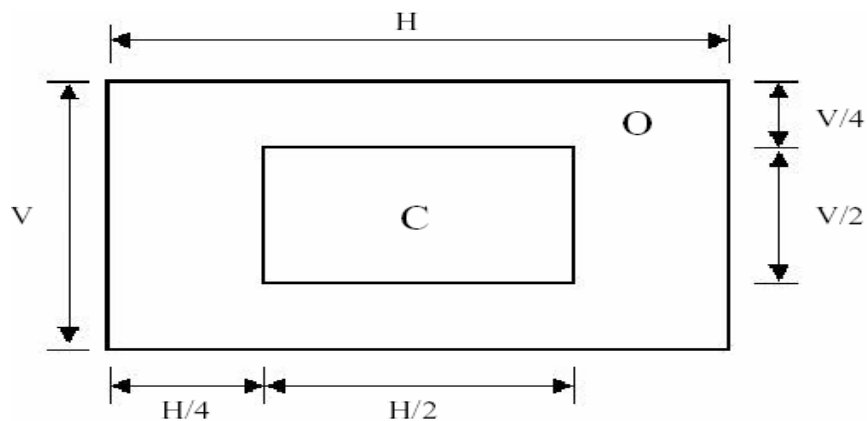
[Note2] Bright dot is defined through 6% transmission ND Filter as following.

Preliminary

The contents of this document are confidential and must not be disclosed wholly or in part to any third part without the prior written consent of COR'F KURNCL 'PEO



[Note3]

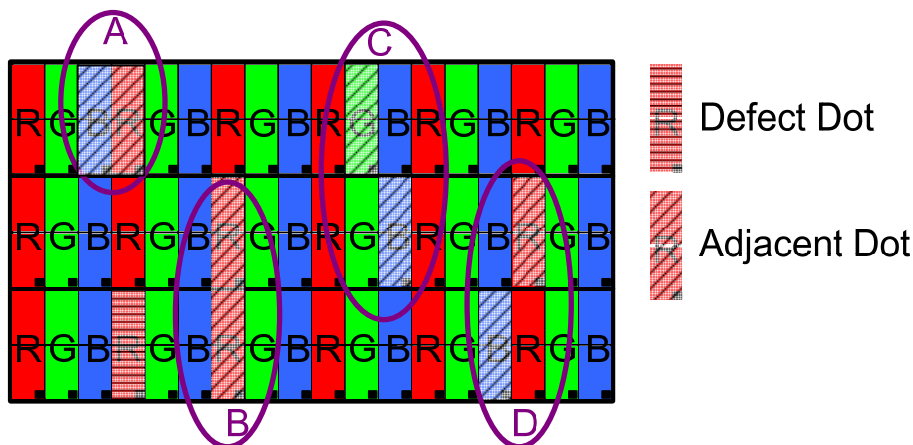


C Area: Center of display area

C Area: Outer of display area

[Note4]

Judge defect dot and adjacent dot as following. Allow below (as A, B, C and D status) adjacent defect dots, including bright and dart adjacent dot. And they will be counted 2 defect dots in total quantity.



- (1) The defects that are not defined above and considered to be problem shall be reviewed and discussed by both parties.
- (2) Defects on the Black Matrix, out of Display area, are not considered as a defect or counted.

Preliminary

The contents of this document are confidential and must not be disclosed wholly or in part to any third part without the prior written consent of COR'F KURNC["PE0

8.6 Reliability Test

Test Item	Test Conditions	Note
High Temperature Operation	70±3°C , t=96 hrs	
Low Temperature Operation	-20±3°C , t=96 hrs	
High Temperature Storage	80±3°C , t=96 hrs	1,2
Low Temperature Storage	-30±3°C , t=96 hrs	1,2
Thermal Shock Test	-20°C ~ 25°C ~ 70°C 30 min. 5 min. 30 min. (1 cycle) Total 5 cycle	1,2
Humidity Test	60 °C, Humidity 90%, 96 hrs	1,2
Vibration Test (Packing)	Sweep frequency : 10 ~ 55 ~ 10 Hz/1min Amplitude : 0.75mm Test direction : X.Y.Z/3 axis Duration : 30min/each axis	2

Note 1 : Condensation of water is not permitted on the module.

Note 2 : The module should be inspected after 1 hour storage in normal conditions
(15-35°C , 45-65%RH).

Definitions of life end point :

- Current drain should be smaller than the specific value.
- Function of the module should be maintained.
- Appearance and display quality should not have degraded noticeably.
- Contrast ratio should be greater than 50% of the initial value.

9. USE PRECAUTIONS

9.1 Handling precautions

- 1) The polarizing plate may break easily so be careful when handling it. Do not touch, press or rub it with a hard-material tool like tweezers.
- 2) Do not touch the polarizing plate surface with bare hands so as not to make it dirty. If the surface or other related part of the polarizing plate is dirty, soak a soft cotton cloth or chamois leather in benzine and wipe off with it. Do not use chemical liquids such as acetone, toluene and isopropyl alcohol. Failure to do so may bring chemical reaction phenomena and deteriorations.
- 3) Remove any spit or water immediately. If it is left for hours, the suffered part may deform or decolorize.
- 4) If the LCD element breaks and any LC stuff leaks, do not suck or lick it. Also if LC stuff is stuck on your skin or clothing, wash thoroughly with soap and water immediately.

9.2 Installing precautions

- 1) The PCB has many ICs that may be damaged easily by static electricity. To prevent breaking by static electricity from the human body and clothing, earth the human body properly using the high resistance and discharge static electricity during the operation. In this case, however, the resistance value should be approx. 1MΩ and the resistance should be placed near the human body rather than the ground surface. When the indoor space is dry, static electricity may occur easily so be careful. We recommend the indoor space should be kept with humidity of 60% or more. When a soldering iron or other similar tool is used for assembly, be sure to earth it.
- 2) When installing the module and ICs, do not bend or twist them. Failure to do so may crack LC element and cause circuit failure.
- 3) To protect LC element, especially polarizing plate, use a transparent protective plate (e.g., acrylic plate, glass etc) for the product case.
- 4) Do not use an adhesive like a both-side adhesive tape to make LCD surface (polarizing plate) and product case stick together. Failure to do so may cause the polarizing plate to peel off.

9.3 Storage precautions

- 1) Avoid a high temperature and humidity area. Keep the temperature between 0°C and 35°C and also the humidity under 60%.
- 2) Choose the dark spaces where the product is not exposed to direct sunlight or fluorescent light.
- 3) Store the products as they are put in the boxes provided from us or in the same conditions

Preliminary

The contents of this document are confidential and must not be disclosed wholly or in part to any third party without the prior written consent of CORFURNCL TPEO

as we recommend.

9.4 Operating precautions

- 1) Do not boost the applied drive voltage abnormally. Failure to do so may break ICs. When applying power voltage, check the electrical features beforehand and be careful. Always turn off the power to the LC module controller before removing or inserting the LC module input connector. If the input connector is removed or inserted while the power is turned on, the LC module internal circuit may break.
- 2) The display response may be late if the operating temperature is under the normal standard, and the display may be out of order if it is above the normal standard. But this is not a failure; this will be restored if it is within the normal standard.
- 3) The LCD contrast varies depending on the visual angle, ambient temperature, power voltage etc. Obtain the optimum contrast by adjusting the LC drive voltage.
- 4) When carrying out the test, do not take the module out of the low-temperature space suddenly. Failure to do so will cause the module condensing, leading to malfunctions.
- 5) Make certain that each signal noise level is within the standard (L level: 0.2Vdd or less and H level: 0.8Vdd or more) even if the module has functioned properly. If it is beyond the standard, the module may often malfunction. In addition, always connect the module when making noise level measurements.
- 6) The CMOS ICs are incorporated in the module and the pull-up and pull-down function is not adopted for the input so avoid putting the input signal open while the power is ON.
- 7) The characteristic of the semiconductor element changes when it is exposed to light emissions, therefore ICs on the LCD may malfunction if they receive light emissions. To prevent these malfunctions, design and assemble ICs so that they are shielded from light emissions.
- 8) Crosstalk occurs because of characteristics of the LCD. In general, crosstalk occurs when the regularized display is maintained. Also, crosstalk is affected by the LC drive voltage. Design the contents of the display, considering crosstalk.

9.5 Other

- 1) Do not disassemble or take the LC module into pieces. The LC modules once disassembled or taken into pieces are not the guarantee articles.
- 2) The residual image may exist if the same display pattern is shown for hours. This residual image, however, disappears when another display pattern is shown or the drive is interrupted and left for a while. But this is not a problem on reliability.
- 3) AMIPRE will provide one year warranty for all products and three months warrantee for all repairing products.

The contents of this document are confidential and must not be disclosed wholly or in part to any third party without the prior written consent of CORFURNCO [REDACTED]

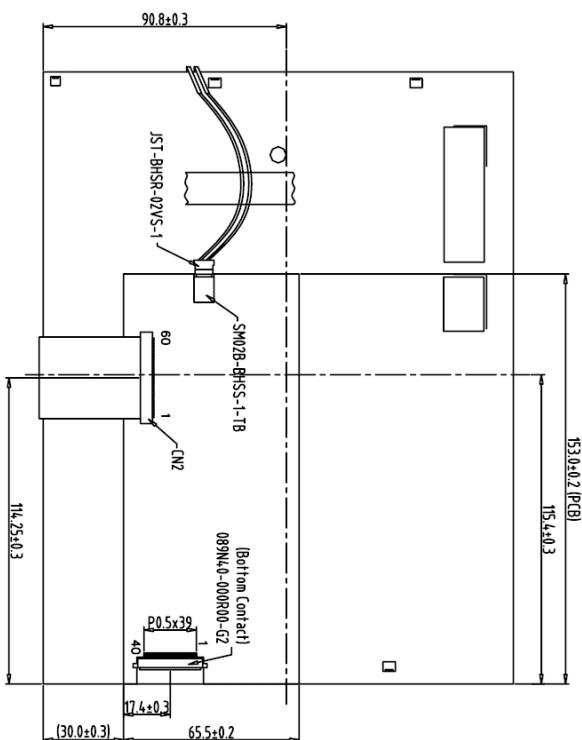
REV	REVISION RECORD	DATE	NAME
0	NEW RELEASE	03-31-09	EMILY
1	TFT-800600-21A-0 Rename to 800600K-80	05-11-08	EMILY

The contents of this document are confidential and must not be disclosed wholly or in part to any third party without the prior written consent of CORFURNCLIFE



1	NC	21	G5
2	NC	22	G4
3	NC	23	G3
4	VLED	24	VSS
5	VLED	25	G2
6	VLED	26	G1
7	VCC	27	G0
8	VCC	28	VSS
9	DE	29	R5
10	NC(XL)	30	R4
11	NC(YT)	31	R3
12	ADJ	32	VSS
13	B5	33	R2
14	B4	34	R1
15	B3	35	R0
16	VSS	36	NC(XR)
17	B2	37	NC(B)
18	B1	38	DCLK
19	B0	39	VSS
20	VSS	40	NC


1. Unless indicated, Tolerance Grade "B" is adopted.
2. UV Glue For OLB Protection.
3. CN2: P0.5 30Pin Connector: E&T 6701 or Equivalent



Back View

REV	REVISION RECORD	DATE NAME
0	NEW RELEASE	03-31-09 EMILY
1	TFT-800600-21A-0 Rename to 800600K-B0	05-11-09 EMILY

[illegible]

 晶采光電科技	
TITLE	
800600K-B0	
(10.4" SVGA + TTL)	
DWG. NO.	1
*090354MA	SHEET 1 OF 1